



Installation Manual

BRP Spyder RT and RS

Glenda LED Light Kit
(Dimmable)
Patent Pending



The Clearwater Company
2546 Mercantile Dr. Ste B
Rancho Cordova, CA 95742
Ph:916.852.7029 Fx:916.852.9410
www.clearwaterlights.com

Please be sure to read our instructions thoroughly before attempting installation.

Prior to Starting, Verify all the Parts are included per the Parts list supplied with your kit to be sure all parts are handy. If not, Contact Clearwater Lights at (916) 852-7029.

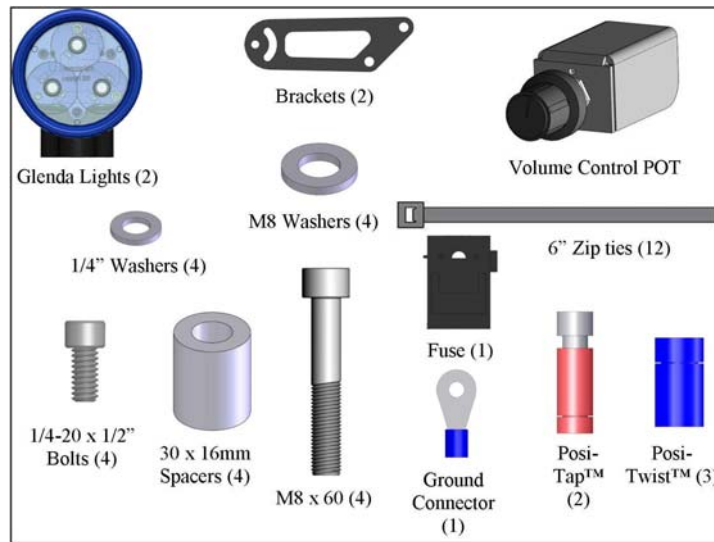


Fig 1

9/1/10

Note: Clearwater lights include a very high quality means of connecting to the motorcycle's electrical system. "Posi" devices made by Posi-Products are used to securely and safely make electrical connections on the bike. You can view instructions on the proper installation of the Posi-Products at <http://www.posi-lock.com>. They simply screw together and mate the wires. We suggest keeping your lights on all the time, we do not furnish an "on-off" switch. It is important to be sure that the wire you use will turn off when the bike is turned off. Otherwise, you will end up with a dead battery.

First, park the motorcycle on hard pavement or concrete to insure the bike will be stable during the installation. Familiarize your self with Body panel removal prior to installation.

Electrical:

- Main power needs to be connected to a SWITCHED HOT. This means one that turns off with the key. An Auxiliary hot is an alternative. Using the supplied Posi-twist connectors, connect the wires according to the accompanying color wire diagram. Attach ground lug to ground on frame tab or other suitable location.
- Use posi-twist to connect red from fuse holder to red wires from lights and pot (4 wires)
- Connect ground/black wire to black wires from lights and pot (4 wires)
- Connect the Green wire from pot to the green wires from the lights (3 wires)
- Connect the white wire from the pot to the high beam headlight hot wire with a positap if you would like to use the high beam feature.

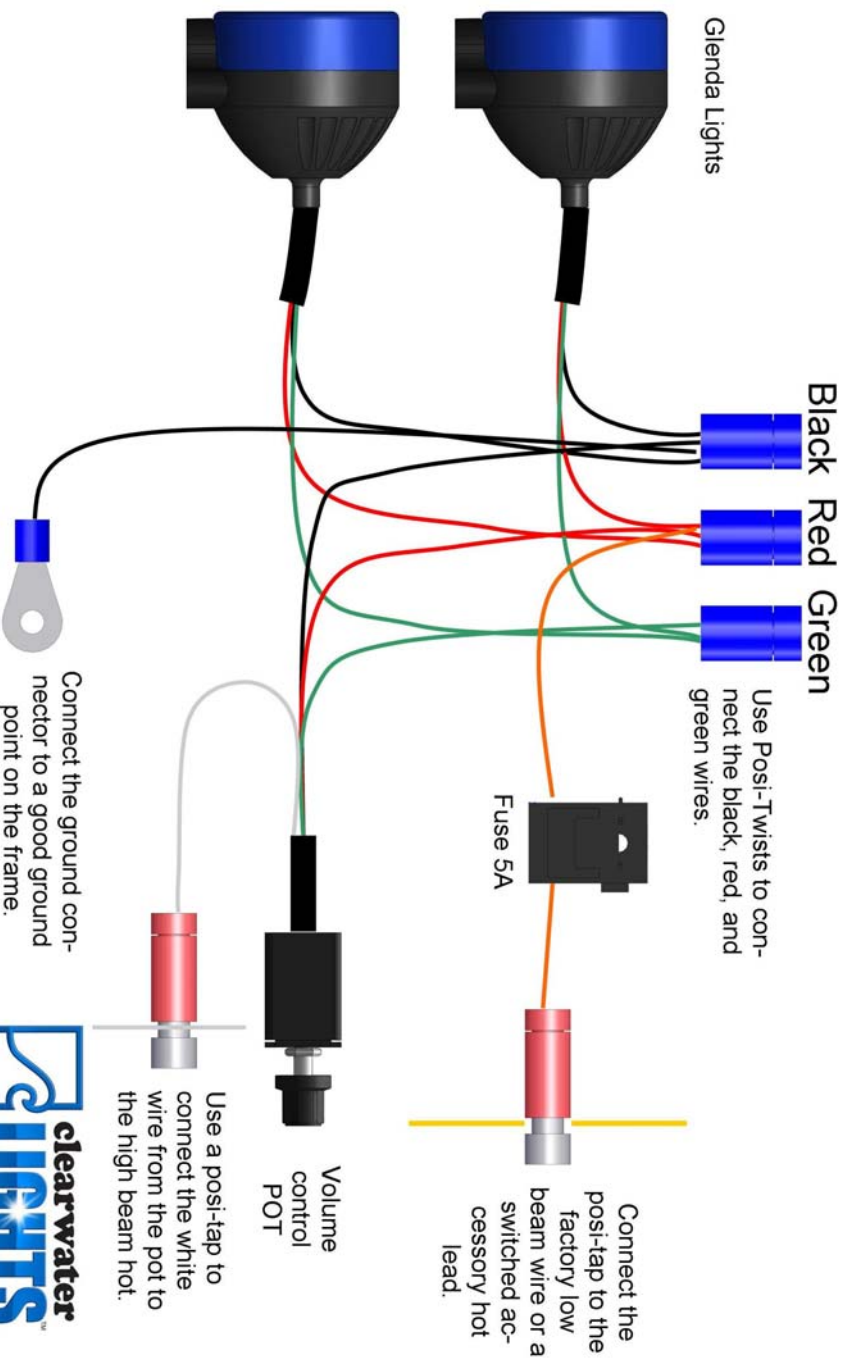
Wire routing:

- Be sure to route wires so that they cannot become tangled or caught in either a suspension part or steering part. Check movement of both steering and suspension before riding the bike.
- It is sometimes helpful to follow existing wire routing.

High Beam Feature

- Our lights come with a feature that makes them flash to full power when you activate the high beam headlight. If you would like to use this feature (recommended), follow these instructions.
- Locate the HIGH BEAM headlight wire. This will be on ONLY when the high beam is illuminated. This will trigger our pot to control the brightness of the lights. Connect the WHITE wire from the pot to this HIGH BEAM circuit wire. See wiring diagram on following page for details.

Wiring Diagram for Glenda Lights



RT Installation Instructions start here.

Removing body panels (You will be working on the left side of the bike only, leave plenty of room)



Fig 2

Pop off the left lower access panel with the Can Am logo. It is held on with 4 rubber washers



Fig 3

Remove left mirror housing .



Fig 4

Carefully pull out connector from Body and disconnect signal wires.



Fig 5

Remove left clear winglet (Two Screws)



Fig 6

Remove Left Top cover under the hood (Uses the plastic rivets, pop up the round keeper in the middle as shown)



Fig 7

Remove upper left panel, (4 Screws) Do not loosen chrome tamper proof screws, they are attached to angled panel hangers. Once you removed the 4 screws angle the panel up to remove.
(Optional) There is a plastic acoustic dampening panel under this panel which can be removed for ease of wiring. (2 Screws)



Fig 8

Pre-Assemble the lights to the light brackets as shown using the supplied hardware, leave the light mounting bolts loose for later alignment.

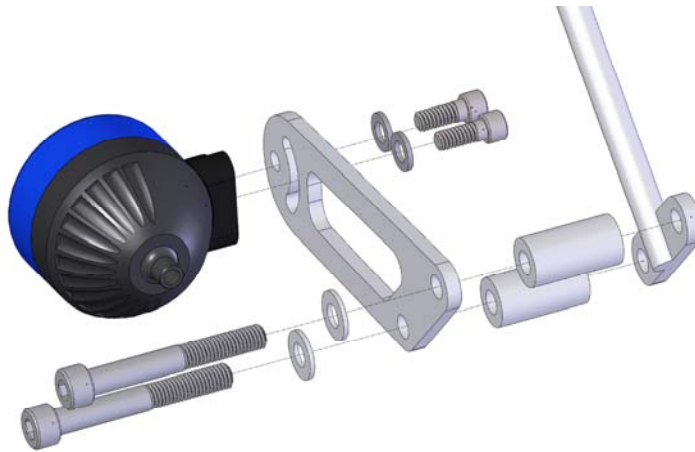


Fig 9

Remove the lower front fender bolt and replace with the new mntg. bolt, spacer and light bracket (Leave loose) Remove upper fender mntg. Bolt, replace with other mntg. Bolt and spacer.



Fig 10

You can now tighten the two new mntg. Bolts and align the face of the lights to 90 degrees from the floor. Tie-wrap the cables as shown and route to the back of the A-Frame.



Fig 11

Tie-wrap the cables along the braided brake lines located under the back of the A-frames to the center of the bike.



Fig 12

Right side showing routing of the cable to the left side of Spyder.



Fig 13

Bring the two cables together and tie-wrap together, route past exhaust and up to existing cable harnesses. Cables shown to the left of oxygen sensor on exhaust pipe.



Fig 14

Drill 1/4" hole on inside of left wheel well cover to tie-wrap cable harness away from exhaust.



Fig 15

This shows tie-wrap on the inside of wheel well cover.



Fig 16

Use “Posi-taps” to tap into headlight wiring, grey with beige stripe is Power, Gray no stripe is High Beam trigger, Black is ground.

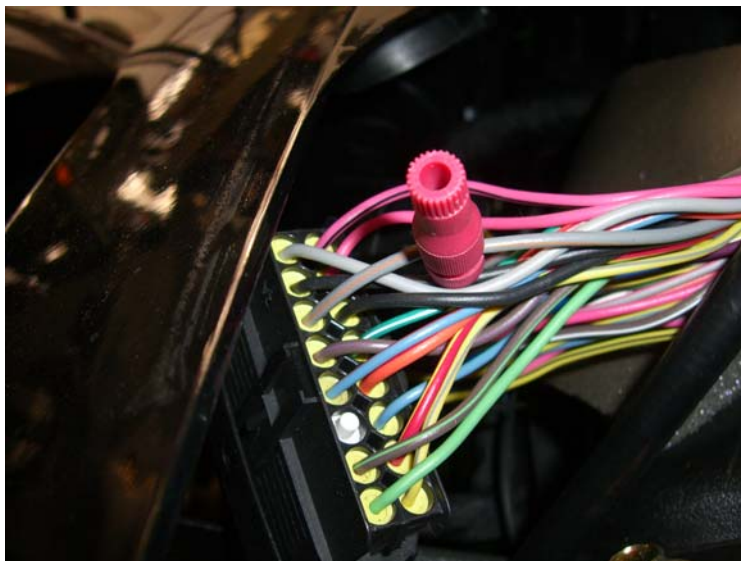


Fig 17

To mount dimmer switch in glove box , Drill 1/4" hole approximately 1/4" from the bottom, install wiring from "volume" housing, locate mounting hole for Housing and drill for screw size.



Fig 18

Mount "volume control" inside glove box using supplied bracket, nuts and bolts.



Fig 19

Tie-wrap dimmer harness cable along existing harness as shown.



Fig 20

Complete wiring of High beam feature and dimmer as shown in wiring diagram at beginning of instructions.

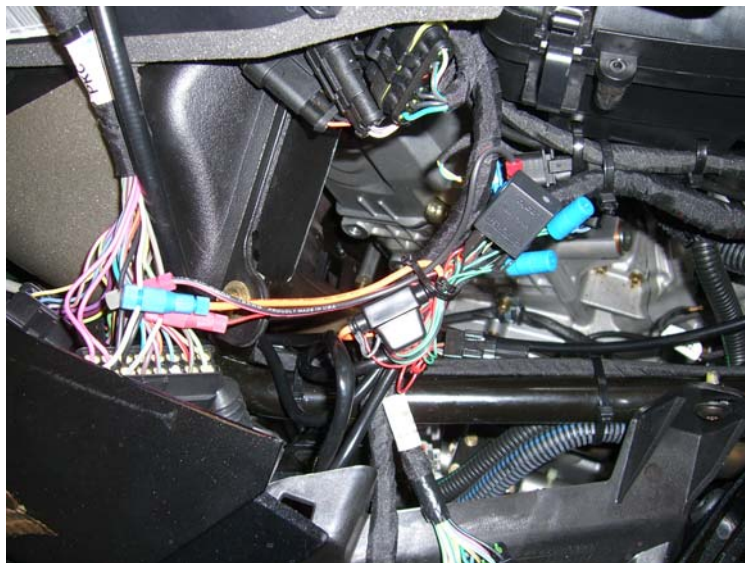


Fig 21

Turn the Spyder on and run to verify correct wiring, lights should dim using dimmer in glove box and go to full brightness with activation of high beam.



Fig 22

Replace all the body panels in reverse order of removal.

RT Installation Complete.

RS Installation Instructions start here.

Remove left lower access panel by turning mounting screws 1/4 turn.



Fig 23

RS Lower panel removed.



Fig 24

Pop off the upper top fuse panel cover under hood as shown, no screws, just rubber washers.



Fig 25

Top panel removed and moved forward.



Fig 26

Slide top cowling back by removing 2 screws in front and 2 plastic rivets under seat in back. Put aside.



Fig 27

You will see a three wire split plastic tube going to the back of the left headlight assembly. Remove the electrical tape at the end of the plastic tube and peel back approximately 6" or to paper label.



Fig 28

You will cut off approximately 4" Install the power taps to the gray (High Beam), red (Low Beam) and black (Ground) wires.



Fig 29

Install high beam feature and dimmer switch per wiring diagram at the beginning of this manual. Route dimmer switch harness along existing left handlebar controls harness.



Fig 30

Mount Dimmer switch housing by removing existing M5 X 25 X .8mm long switchgear top mounting screw and replacing with new M5 X 45 X .8 screw , spacer and bracket as shown below.



Fig 31



Fig 32

Test wiring by starting the Spyder and testing Glenda light operation.



Fig 33

Re-Assemble the body panels on the Spyder in reverse order.

RS Installation Complete.

Thank you for purchasing your Clearwater lights. We hope this product will help make you a safer rider. Please feel free to send us comments or suggestions at any time. We learn from you. Keep checking our website for more new exciting products to help you see better at night such as our flashlights and our 36W LED Krista light.

Ride safe!

Sincerely,

Glenn and the guys at Clearwater.



The Clearwater Company
2546 Mercantile Dr. Ste B
Rancho Cordova, CA 95742
Ph:916.852.7029 Fx:916.852.9410
www.clearwaterlights.com

July 20, 2011